



## Submersible Sewage Grinder Pumps

### GD Series

For residential, industrial and municipal wastewater applications. Grind solids into small particles enable small OD pipeline connected to conventional sewage system.

#### Features

- Completely water-tight cable entry sealed with epoxy resin.
- Double mechanical seals (SIC/SIC + CA/CE) ensure greatest durability.
- Without clogging or binding. No close clearance and all flow passages are unobstructed.
- Grinder impeller and shredding ring are easily replaceable, no need to take pump apart. The parts are made of High Chrome Steel with HRC 55 – 58 to grind paper, textile material and solid contaminants in waste water.



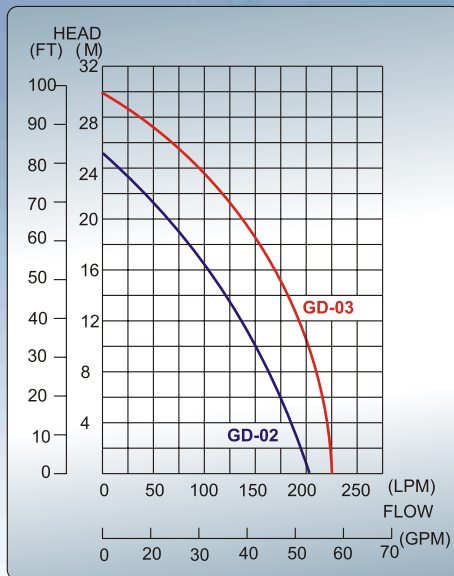
#### Applications:

- Low pressure sewerage and individual residential applications.
- Pump slurry or wastewater to a treatment plant, lagoon, or gravity manhole through a discharge pipe as small as 1-1/4" in diameter.
- Waste treatment for villas, summer houses and other residential areas which can not be directly connected to the existing sewage system.



# GD Series

## Performance

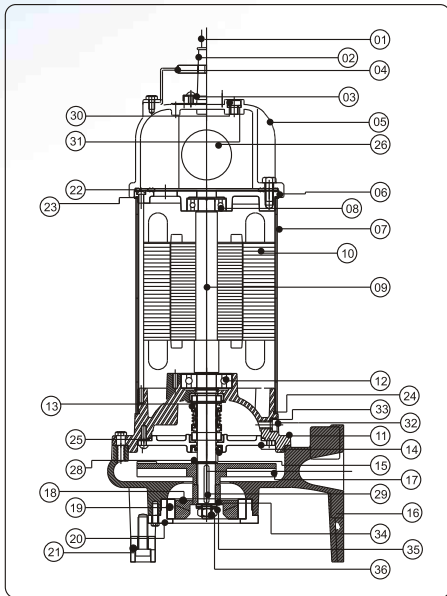


• Bottom View of Chrome Steel Cutter



• Guide Rail Pedestal

## Construction



NO.	Description	Material	NO.	Description	Material
1	Power Cord	AWG/H07RNF	19	Cutter Ring	CHROME STEEL
2	Rubber Head	NBR	20	Cutter Seat	FC 200
3	Gland	SUS	21	Base	PC
4	Handle	SUS 304	22	Gasket	NBR
5	Top Cover	FC 200	23	O-ring	NBR
6	Bearing Cover	FC 200	24	O-ring	NBR
7	Motor Housing	SUS 304	25	O-ring	NBR
8	Upper Bearing	CNM5K	26	Capacitor	PP
9	Shaft	SUS 410	27	Retaining Ring	SUS
10	Stator	SILICON STEEL	28	Retaining Ring	SUS
11	Seal Plate	FC 200	29	Key	SUS
12	Lower Bearing	CNM5K	30	Screw	SUS
13	Me. Seal	CA/CE	31	Packing	NBR
14	Seal Cover	FC 200	32	Screw	SUS
15	Oil Seal	NBR	33	Packing	NBR
16	Pump Casing	FC 200	34	Washer	SUS
17	Impeller	FC 200	35	Spring Washer	SUS
18	Cutter	CHROME STEEL	36	Nut	SUS

Remarks: With optional TC/TC+CA/CE double mech. seal, guide rail pedestal, and control panel.

## Specifications

Model	Output		Discharge		Rated		Maximum		Dimension	Weight
	HP	kW	mm	Inch	Head(M)	Flow(LPM)	Head(M)	Flow(LPM)	L x W x H (mm)	Kg
GD-02	2	1.5	32	1-1/4"	16	125	25	200	380x200x480	32
GD-03	3	2.2	32	1-1/4"	20	130	30	220	380x200x510	35



## Hung Pump Group

16 Lien-Ming Street, Ba-De City 334,  
Taoyuan, Taiwan  
TEL:(886) -3-371-3969  
FAX:(886) -3-371-3960  
E-Mail: hungpump@ms9.hinet.net